

STATE OF UTAH

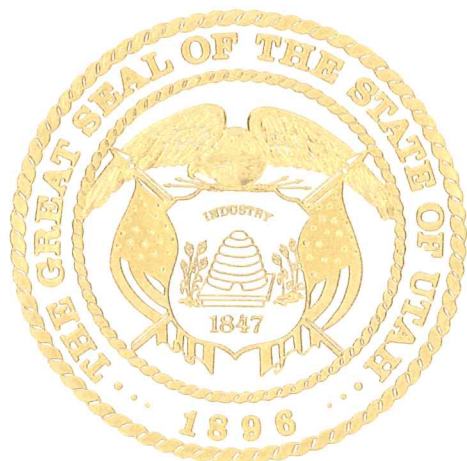


OFFICE OF THE LIEUTENANT GOVERNOR

CERTIFICATE OF ANNEXATION

I, GARY R. HERBERT, LIEUTENANT GOVERNOR OF THE STATE OF UTAH, HEREBY CERTIFY THAT there has been filed in my office a notice of annexation from SANTAQUIN CITY, dated June 30th, 2009, complying with Section 10-2-425, Utah Code Annotated, 1953, as amended.

NOW, THEREFORE, notice is hereby given to all whom it may concern that the attached is a true and correct copy of the notice of annexation, referred to above, on file with the Office of the Lieutenant Governor pertaining to SANTAQUIN CITY, located in Utah County, State of Utah.



IN TESTIMONY WHEREOF, I have hereunto set my hand, and affixed the Great Seal of the State of Utah this 15th day of July, 2009 at Salt Lake City, Utah.

Handwritten signature of Gary R. Herbert in black ink.

GARY R. HERBERT
Lieutenant Governor



A Community Prospering in Country Living

Farming • Equestrian • Recreation

June 30, 2009

Lt. Governor Gary R. Herbert
210 State Capitol
Salt Lake City, Utah 84114

RE: NOTICE OF AN IMPENDING BOUNDARY ACTION

Dear Lt. Governor Herbert:

On June 3, 2009, the City Council of Santaquin City, a fifth class city of the State of Utah, enacted Ordinance 06-05-2009 to annex certain real property into the City, which ordinance became effective on June 4, 2009. The City hereby provides this Notice of an Impending Boundary Action, pursuant to Utah Code Ann. § 10-2-425 (2008), and respectfully requests that the appropriate Certificate of Annexation be issued.

Enclosed with this Notice are the following documents:

- 1) a signed and verified statement of the Santaquin City Council, by and through Mayor James E. DeGraffenried, certifying that all requirements applicable to the annexation have been met; and
- 2) a copy of the "approved local entity plat map", approved as such by the Utah County Engineer.

Thank you for your cooperation and consideration in this matter.

Respectfully Submitted,

SANTAQUIN CITY COUNCIL


James E. DeGraffenried, Mayor

Received

Enclosures

JUL 09 2009

Gary R. Herbert
Lieutenant Governor

www.santaquin.org

OFFICE (801) 754-3211 • FAX (801) 754-3526 • 45 West 100 South • Santaquin, UT 84655



A Community Prospering in Country Living

Farming • Equestrian • Recreation

STATE OF UTAH)
 : ss.
COUNTY OF UTAH)

On June 3, 2009, the City Council of Santaquin City, Utah, adopted Ordinance No. 06-05-2009, for the purpose of annexing certain property into Santaquin City. The City Council hereby certifies that it has complied with all requirements applicable to the annexation of the property described in the approved final local entity plat, a copy of which is enclosed herewith.

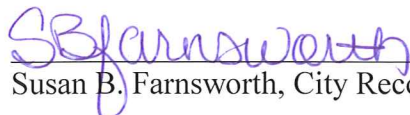
DATED this 30 day of June, 2009.



SANTAQUIN CITY


JAMES E. DEGRAFFENRIED, Mayor

ATTEST:


Susan B. Farnsworth, City Recorder

Returned: Santaquin City
45 W 100 S
Santaquin UT 84655

Ordinance No. 06-05-2009

AN ORDINANCE AMENDING THE ZONING MAP OF SANTAQUIN CITY TO INCLUDE THE NORTHEAST SANTAQUIN ANNEXATION AREA LOCATED ADJACENT TO THE CURRENT CORPORATE BOUNDARIES OF SANTAQUIN CITY, UTAH

WHEREAS, on March 14, 2008, the owners of certain real property adjacent to the City of Santaquin (the "Petitioners"), petitioned to annex the real property described in Exhibit A (the "Property") to the City; and

WHEREAS, the Petitioners own the majority of the privately owned real property within the area proposed for annexation; and

WHEREAS, all Affected Entities have received notice of the proposed annexation and amendment to the official zone map; and

WHEREAS, on June 3, 2009, the Santaquin City Council held a public hearing to receive public input concerning the proposed annexation, which public hearing was properly scheduled and noticed in accordance with Utah law; and

WHEREAS, the area proposed for annexation lies within the City's current Annexation Policy Plan; and

WHEREAS, Santaquin City, Utah desires to amend the Official Zone Map of Santaquin City to include the property within the City's regulatory boundary.

NOW, THEREFORE BE IT ORDAINED by the City Council of Santaquin City, Utah as follows:

SECTION 1. Official Zone Map Amended. The Official Zone Map of Santaquin City as adopted by section 10-7-2 of the Santaquin City Code is hereby amended to include the annexed real property as depicted in Exhibit A.

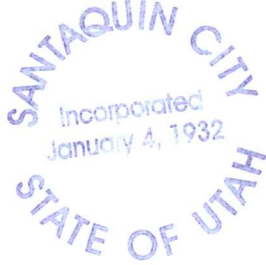
SECTION 2. Designation. The amended area shall be zoned as depicted on the zoning map, a copy of which is attached hereto as Exhibit B and incorporated herein by reference.

SECTION 3. Execution of Documents. The Mayor is hereby authorized to execute AMENDED ARTICLES OF INCORPORATION OF THE CITY OF SANTAQUIN and a certification of the Santaquin City Council that the legal procedures for annexation have been completed.

SECTION 4. Posting. A copy of this ordinance shall be deposited in the office of Santaquin City Recorder, and on June 4, 2009, the Santaquin City Recorder shall certify that this Ordinance has been posted in three public places within the municipality, as required in Utah Code Annotated § 10-3-711(1).

SECTION 5. Effective Date. This Ordinance shall take effect on June 4, 2009, and the described Annexation shall be effective upon the certification of the Utah Lt. Governor.

PASSED AND ADOPTED this 3 day of June, 2009.



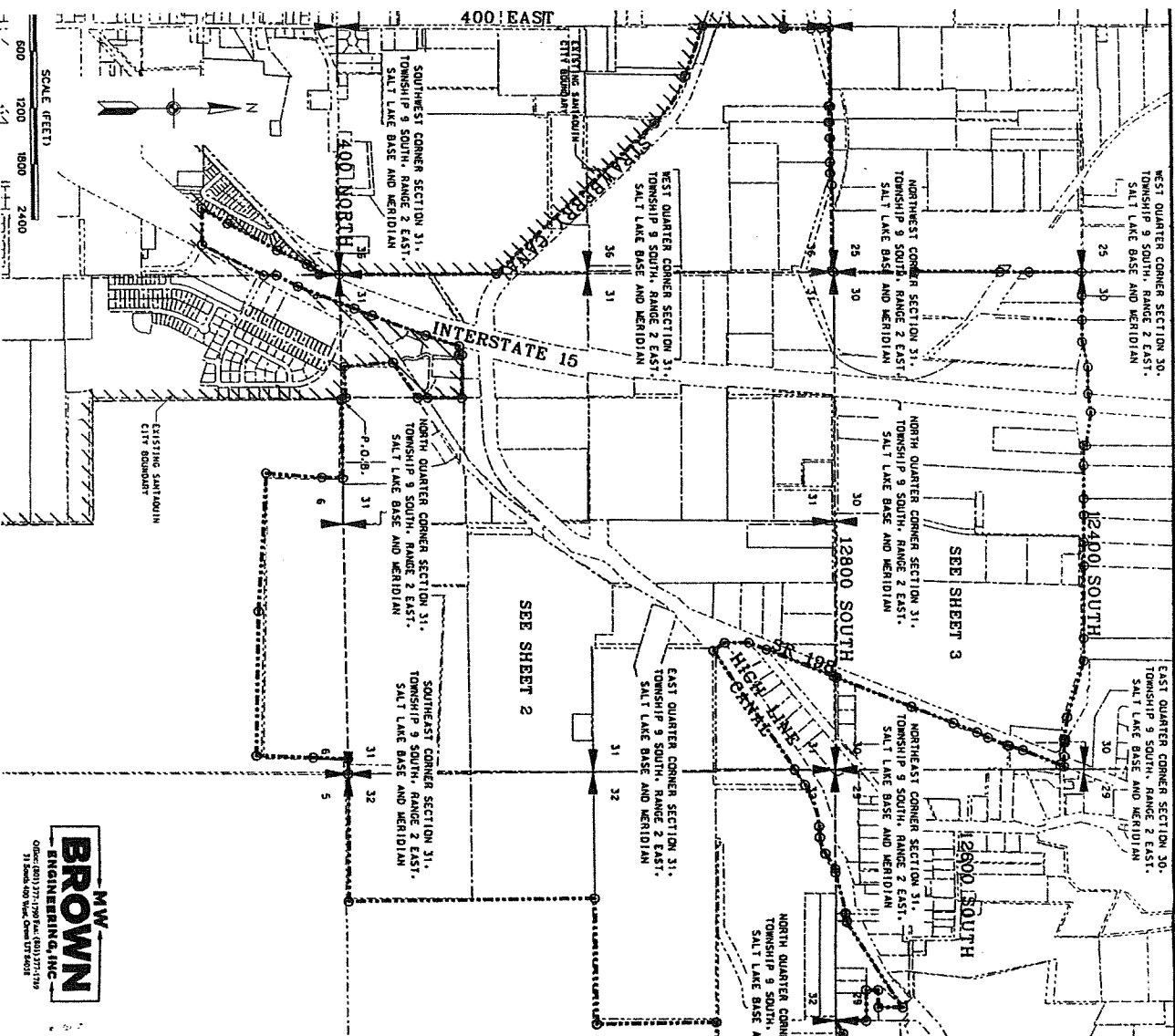
SANTAQUIN CITY

James E. DeGraffenried
James E. DeGraffenried, Mayor

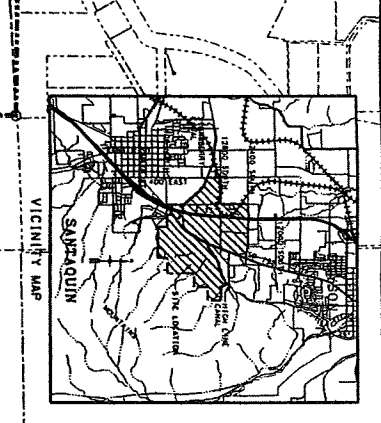
ATTEST:

S B Earnsworth
Susan B. Earnsworth, City Recorder

Exhibit "A" Ordinance 06-05-2009



MW BROWN ENGINEERING, INC. 31 Reed, 400 Waco, Ohio 43081



SURVEYOR'S CERTIFICATE I, BARRY ANDERSON, DO HEREBY CERTIFY THAT I AM A REGISTERED LAND SURVEYOR AND THAT I HAVE EXAMINED THE ACQUISITION AND DEEDS AND THAT THE MAP OF THE TRACT OF LAND TO BE ANNEXED TO SPANISH FORK CITY, UTAH COUNTY, UTAH

ACCEPTANCE BY LEGISLATIVE BODY THIS IS TO CERTIFY THAT THE UNDERSEIGNED SPANISH FORK CITY COUNCIL HAS ADOPTED A RESOLUTION BY ITS AUTHORITY TO ANNEX THE TRACT OF LAND SHOWN HEREON AND HAS SUBSEQUENTLY ADOPTED AN ORDINANCE ANNEXING THE TRACT OF LAND SHOWN HEREON AND THAT THE ANNEXATION IS IN ACCORDANCE WITH THE UTAH CONSTITUTION AND THAT THE ANNEXATION OF THE TRACT AS SHOWN IS A PART OF SAID CITY AND THAT SAID TRACT OF LAND IS TO BE KNOWN HEREINAFTER AS THE NORTHWEST SARTAQUIN ANNEXATION.



BOUNDARY DESCRIPTION CONTAINED BEING A POINT ON THE EXISTING SPANISH FORK CITY BOUNDARY LINE, SAID POINT IS LOCATED NORTH 89°08'47" EAST ALONG THE SECTION LINE 134.15 FEET AND NORTH 0°0' FEET FROM THE SOUTHWEST CORNER OF SECTION 31, TOWNSHIP 9 SOUTH, RANGE 2 EAST, SALT LAKE BASE AND MERIDIAN. THE CORNER OF THE SECTION LINE IS 134.15 FEET WEST OF THE SECTION LINE 134.15 FEET. THE CORNER OF THE SECTION LINE IS 134.15 FEET WEST OF THE SECTION LINE 134.15 FEET. THE CORNER OF THE SECTION LINE IS 134.15 FEET WEST OF THE SECTION LINE 134.15 FEET.

ANNEXATION PLAT SHEET 1 OF 4 NORTHWEST SARTAQUIN ANNEXATION CITY OF SPANISH FORK, UTAH UTAH COUNTY, UTAH SCALE: 1" = 500 FEET

This plat has been reviewed by the County Surveyor and is hereby certified as a final plat.
 25-20-2009
 Gary Kaulder - County Surveyor



CURVE TABLE

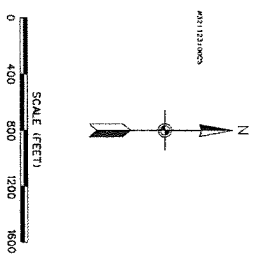
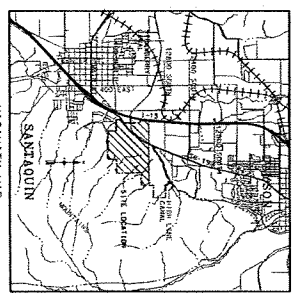
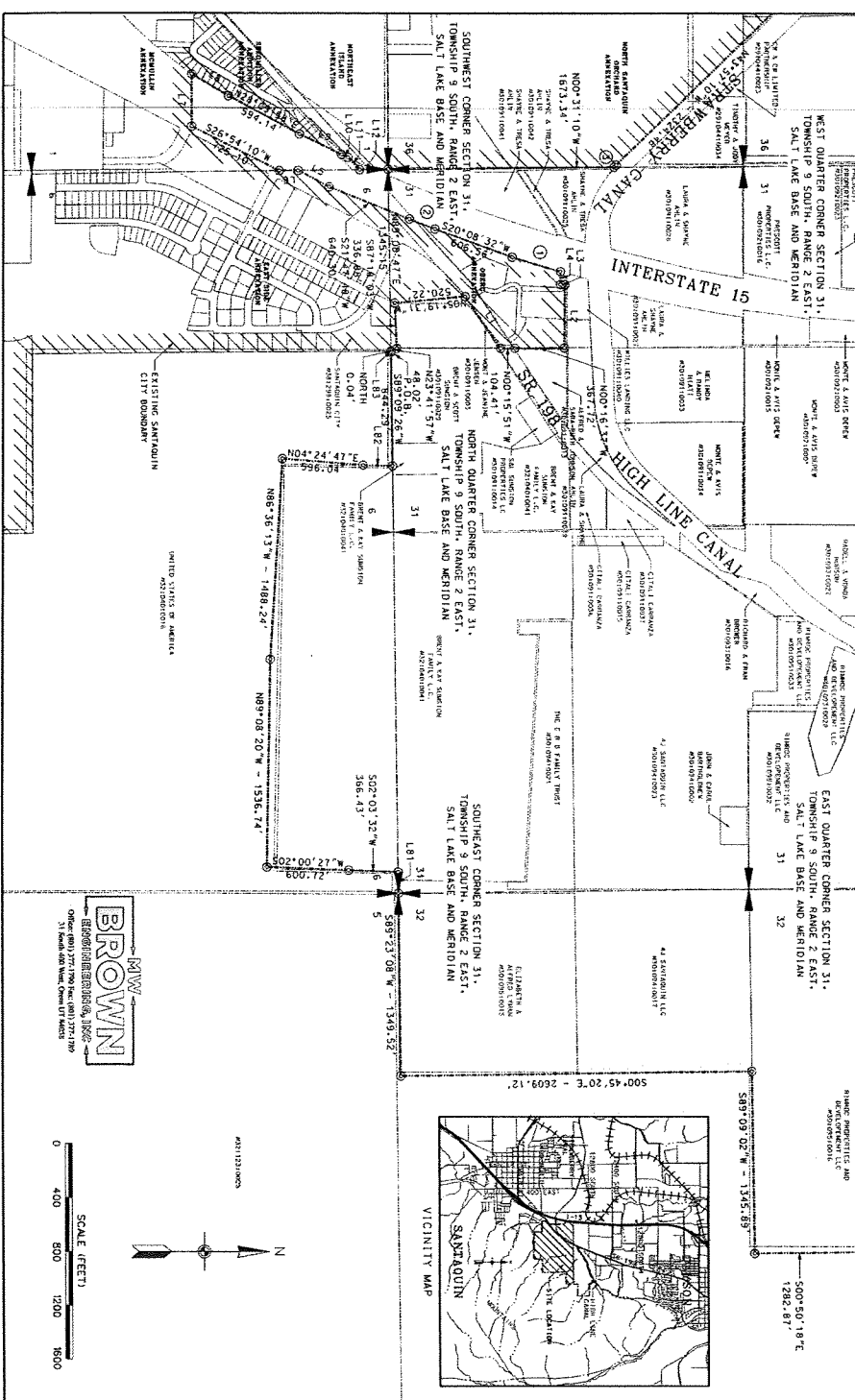
STATION	CHORD BEARING	CHORD DISTANCE	ARC BEARING	ARC DISTANCE	CHORD BEARING	CHORD DISTANCE	ARC BEARING	ARC DISTANCE
1+00.00	S 89° 09' 02" W	1345.89	100° 00' 00" E	1000.00	S 89° 09' 02" W	1345.89	100° 00' 00" E	1000.00
1+100.00	S 89° 09' 02" W	1345.89	100° 00' 00" E	1000.00	S 89° 09' 02" W	1345.89	100° 00' 00" E	1000.00
1+200.00	S 89° 09' 02" W	1345.89	100° 00' 00" E	1000.00	S 89° 09' 02" W	1345.89	100° 00' 00" E	1000.00

LINE TABLE

STATION	BEARING	DISTANCE	CUMULATIVE DISTANCE
1+00.00	S 89° 09' 02" W	1345.89	1345.89
1+100.00	S 89° 09' 02" W	1345.89	2691.78
1+200.00	S 89° 09' 02" W	1345.89	4037.67
1+300.00	S 89° 09' 02" W	1345.89	5383.56
1+400.00	S 89° 09' 02" W	1345.89	6729.45
1+500.00	S 89° 09' 02" W	1345.89	8075.34
1+600.00	S 89° 09' 02" W	1345.89	9421.23
1+700.00	S 89° 09' 02" W	1345.89	10767.12
1+800.00	S 89° 09' 02" W	1345.89	12113.01
1+900.00	S 89° 09' 02" W	1345.89	13458.90
2+000.00	S 89° 09' 02" W	1345.89	14804.79
2+100.00	S 89° 09' 02" W	1345.89	16150.68
2+200.00	S 89° 09' 02" W	1345.89	17496.57
2+300.00	S 89° 09' 02" W	1345.89	18842.46
2+400.00	S 89° 09' 02" W	1345.89	20188.35
2+500.00	S 89° 09' 02" W	1345.89	21534.24
2+600.00	S 89° 09' 02" W	1345.89	22880.13
2+700.00	S 89° 09' 02" W	1345.89	24226.02
2+800.00	S 89° 09' 02" W	1345.89	25571.91
2+900.00	S 89° 09' 02" W	1345.89	26917.80
3+000.00	S 89° 09' 02" W	1345.89	28263.69
3+100.00	S 89° 09' 02" W	1345.89	29609.58
3+200.00	S 89° 09' 02" W	1345.89	30955.47
3+300.00	S 89° 09' 02" W	1345.89	32301.36
3+400.00	S 89° 09' 02" W	1345.89	33647.25
3+500.00	S 89° 09' 02" W	1345.89	34993.14
3+600.00	S 89° 09' 02" W	1345.89	36339.03
3+700.00	S 89° 09' 02" W	1345.89	37684.92
3+800.00	S 89° 09' 02" W	1345.89	39030.81
3+900.00	S 89° 09' 02" W	1345.89	40376.70
4+000.00	S 89° 09' 02" W	1345.89	41722.59
4+100.00	S 89° 09' 02" W	1345.89	43068.48
4+200.00	S 89° 09' 02" W	1345.89	44414.37
4+300.00	S 89° 09' 02" W	1345.89	45760.26
4+400.00	S 89° 09' 02" W	1345.89	47106.15
4+500.00	S 89° 09' 02" W	1345.89	48452.04
4+600.00	S 89° 09' 02" W	1345.89	49797.93
4+700.00	S 89° 09' 02" W	1345.89	51143.82
4+800.00	S 89° 09' 02" W	1345.89	52489.71
4+900.00	S 89° 09' 02" W	1345.89	53835.60
5+000.00	S 89° 09' 02" W	1345.89	55181.49
5+100.00	S 89° 09' 02" W	1345.89	56527.38
5+200.00	S 89° 09' 02" W	1345.89	57873.27
5+300.00	S 89° 09' 02" W	1345.89	59219.16
5+400.00	S 89° 09' 02" W	1345.89	60565.05
5+500.00	S 89° 09' 02" W	1345.89	61910.94
5+600.00	S 89° 09' 02" W	1345.89	63256.83
5+700.00	S 89° 09' 02" W	1345.89	64602.72
5+800.00	S 89° 09' 02" W	1345.89	65948.61
5+900.00	S 89° 09' 02" W	1345.89	67294.50
6+000.00	S 89° 09' 02" W	1345.89	68640.39
6+100.00	S 89° 09' 02" W	1345.89	69986.28
6+200.00	S 89° 09' 02" W	1345.89	71332.17
6+300.00	S 89° 09' 02" W	1345.89	72678.06
6+400.00	S 89° 09' 02" W	1345.89	74023.95
6+500.00	S 89° 09' 02" W	1345.89	75369.84
6+600.00	S 89° 09' 02" W	1345.89	76715.73
6+700.00	S 89° 09' 02" W	1345.89	78061.62
6+800.00	S 89° 09' 02" W	1345.89	79407.51
6+900.00	S 89° 09' 02" W	1345.89	80753.40
7+000.00	S 89° 09' 02" W	1345.89	82099.29
7+100.00	S 89° 09' 02" W	1345.89	83445.18
7+200.00	S 89° 09' 02" W	1345.89	84791.07
7+300.00	S 89° 09' 02" W	1345.89	86136.96
7+400.00	S 89° 09' 02" W	1345.89	87482.85
7+500.00	S 89° 09' 02" W	1345.89	88828.74
7+600.00	S 89° 09' 02" W	1345.89	90174.63
7+700.00	S 89° 09' 02" W	1345.89	91520.52
7+800.00	S 89° 09' 02" W	1345.89	92866.41
7+900.00	S 89° 09' 02" W	1345.89	94212.30
8+000.00	S 89° 09' 02" W	1345.89	95558.19
8+100.00	S 89° 09' 02" W	1345.89	96904.08
8+200.00	S 89° 09' 02" W	1345.89	98249.97
8+300.00	S 89° 09' 02" W	1345.89	99595.86
8+400.00	S 89° 09' 02" W	1345.89	100941.75
8+500.00	S 89° 09' 02" W	1345.89	102287.64
8+600.00	S 89° 09' 02" W	1345.89	103633.53
8+700.00	S 89° 09' 02" W	1345.89	104979.42
8+800.00	S 89° 09' 02" W	1345.89	106325.31
8+900.00	S 89° 09' 02" W	1345.89	107671.20
9+000.00	S 89° 09' 02" W	1345.89	109017.09
9+100.00	S 89° 09' 02" W	1345.89	110362.98
9+200.00	S 89° 09' 02" W	1345.89	111708.87
9+300.00	S 89° 09' 02" W	1345.89	113054.76
9+400.00	S 89° 09' 02" W	1345.89	114400.65
9+500.00	S 89° 09' 02" W	1345.89	115746.54
9+600.00	S 89° 09' 02" W	1345.89	117092.43
9+700.00	S 89° 09' 02" W	1345.89	118438.32
9+800.00	S 89° 09' 02" W	1345.89	119784.21
9+900.00	S 89° 09' 02" W	1345.89	121130.10
10+000.00	S 89° 09' 02" W	1345.89	122475.99

MATCH LINE SHEET 3 OF 4

MATCH LINE SHEET 4 OF 4



SURVEYOR'S CERTIFICATE
 I, GARY KAULDER, COUNTY SURVEYOR, DO HEREBY CERTIFY THAT THE ABOVE DESCRIBED LAND IS THE PROPERTY OF THE STATE OF UTAH (TOWNSHIP 9 SOUTH, RANGE 2 EAST, SALT LAKE BASIN AND MERIDIAN) AND THAT THE SAME IS BEING OFFERED FOR SALE TO THE PUBLIC BY THE CITY OF SANTAQUIN, UTAH.
 BOUNDARY DESCRIPTION
 SEE SHEET 1 OF 4.



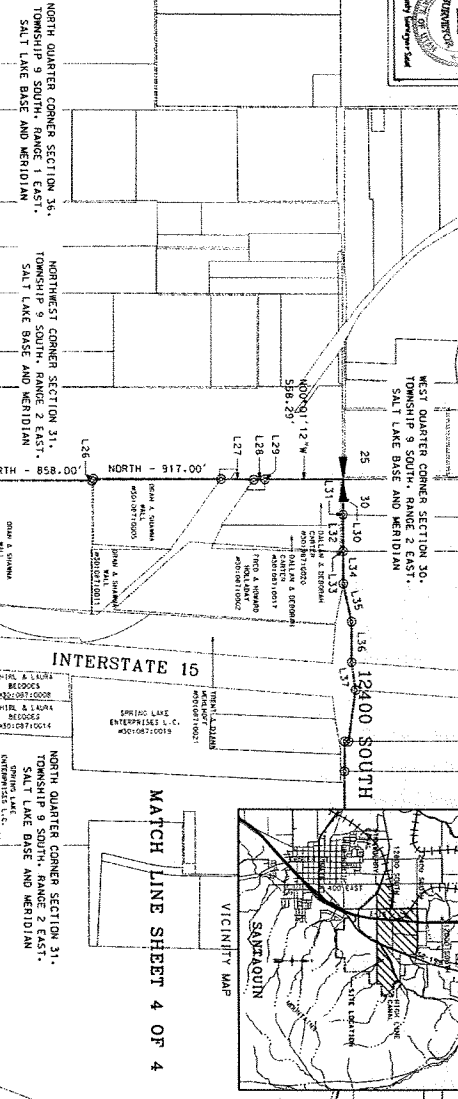
ACCEPTANCE BY LEGISLATIVE BODY
 THIS IS TO CERTIFY THAT WE, THE UNDERSIGNED SPONSOR FROM CITY COUNCIL, HAVE ADOPTED A RESOLUTION OF THE CITY COUNCIL TO ACCEPT THE TRACT OF LAND SHOWN HEREON, SPONSORED BY THE CITY OF SANTAQUIN, UTAH, AND THAT A COPY OF THE ORDINANCE HAS BEEN PREPARED FOR FILED HEREWITH. ALL IN ACCORDANCE WITH UTAH CODE SECTION 92-2-10 AS REVISED AND THAT WE HAVE EXAMINED THE PLAT AS A PART OF SAID CITY AND THAT SAID TRACT OF LAND IS TO BE KNOWN HEREAFTER AS THE NORTHEAST SANTAQUIN ANNEXATION.
 DATED THIS 25th DAY OF JUNE, 2009.

ANNEXATION PLAT
 SHEET 2 OF 4
 NORTHEAST
 SANTAQUIN
 ANNEXATION

THE PLAT APPROVED BY UTAH COUNTY AND THE MUNICIPALITY THEREON.
 SALT LAKE COUNTY, UTAH
 SCALE 1" = 400 FEET

This plat has been prepared by the County Surveyor at a cost of \$1.75 per acre. Said plat is subject to a final review and approval by the County Board of Supervisors. A fee of \$1.75 is provided.

County Surveyor
Gary Schultz



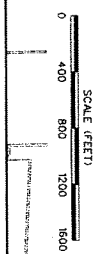
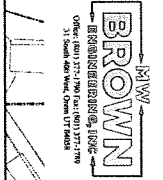
CURVE TABLE

STATION	CHORD BEARING	CHORD DISTANCE	ARC BEARING	ARC DISTANCE
10	N72°15'00"E	53.99	N72°15'00"E	53.99
11	N72°15'00"E	53.99	N72°15'00"E	53.99
12	N72°15'00"E	53.99	N72°15'00"E	53.99
13	N72°15'00"E	53.99	N72°15'00"E	53.99
14	N72°15'00"E	53.99	N72°15'00"E	53.99
15	N72°15'00"E	53.99	N72°15'00"E	53.99
16	N72°15'00"E	53.99	N72°15'00"E	53.99
17	N72°15'00"E	53.99	N72°15'00"E	53.99
18	N72°15'00"E	53.99	N72°15'00"E	53.99
19	N72°15'00"E	53.99	N72°15'00"E	53.99
20	N72°15'00"E	53.99	N72°15'00"E	53.99

LINE TABLE

STATION	BEARING	DISTANCE	CUMULATIVE DISTANCE
1	N89°40'54"E	830.91	830.91
2	N19°15'00"E	115.00	945.91
3	N19°15'00"E	115.00	1060.91
4	N19°15'00"E	115.00	1175.91
5	N19°15'00"E	115.00	1290.91
6	N19°15'00"E	115.00	1405.91
7	N19°15'00"E	115.00	1520.91
8	N19°15'00"E	115.00	1635.91
9	N19°15'00"E	115.00	1750.91
10	N19°15'00"E	115.00	1865.91
11	N19°15'00"E	115.00	1980.91
12	N19°15'00"E	115.00	2095.91
13	N19°15'00"E	115.00	2210.91
14	N19°15'00"E	115.00	2325.91
15	N19°15'00"E	115.00	2440.91
16	N19°15'00"E	115.00	2555.91
17	N19°15'00"E	115.00	2670.91
18	N19°15'00"E	115.00	2785.91
19	N19°15'00"E	115.00	2900.91
20	N19°15'00"E	115.00	3015.91
21	N19°15'00"E	115.00	3130.91
22	N19°15'00"E	115.00	3245.91
23	N19°15'00"E	115.00	3360.91
24	N19°15'00"E	115.00	3475.91
25	N19°15'00"E	115.00	3590.91
26	N19°15'00"E	115.00	3705.91
27	N19°15'00"E	115.00	3820.91
28	N19°15'00"E	115.00	3935.91
29	N19°15'00"E	115.00	4050.91
30	N19°15'00"E	115.00	4165.91
31	N19°15'00"E	115.00	4280.91
32	N19°15'00"E	115.00	4395.91
33	N19°15'00"E	115.00	4510.91
34	N19°15'00"E	115.00	4625.91
35	N19°15'00"E	115.00	4740.91
36	N19°15'00"E	115.00	4855.91

Digitized by Google, 11/19/2023 10:15:00 AM



ACCEPTANCE BY LEGISLATIVE BODY

THIS IS TO CERTIFY THAT THE LEGISLATIVE BODY OF THE CITY OF SANTAQUIN HAS REVIEWED AND APPROVED THE ABOVE DESCRIBED PLAT AND HAS ORDERED THAT THE SAME BE RECORDED IN THE OFFICE OF THE COUNTY CLERK AND IN THE PUBLIC RECORDS OF THE COUNTY OF SANTAQUIN, UTAH.

DATED THIS 2nd DAY OF JANUARY 2023

[Signatures]
 County Surveyor
 City Clerk
 Council Member

ANNEXATION PLAT

SHEET 3 OF 4

NORTHEAST SANTAQUIN ANNEXATION

SCALE: 1" = 400 FEET

UTAH COUNTY, UTAH

THIS PLAT APPROVED BY UTAH COUNTY AND THE JURISDICTIONS THEREOF.

SURVEYOR'S CERTIFICATE

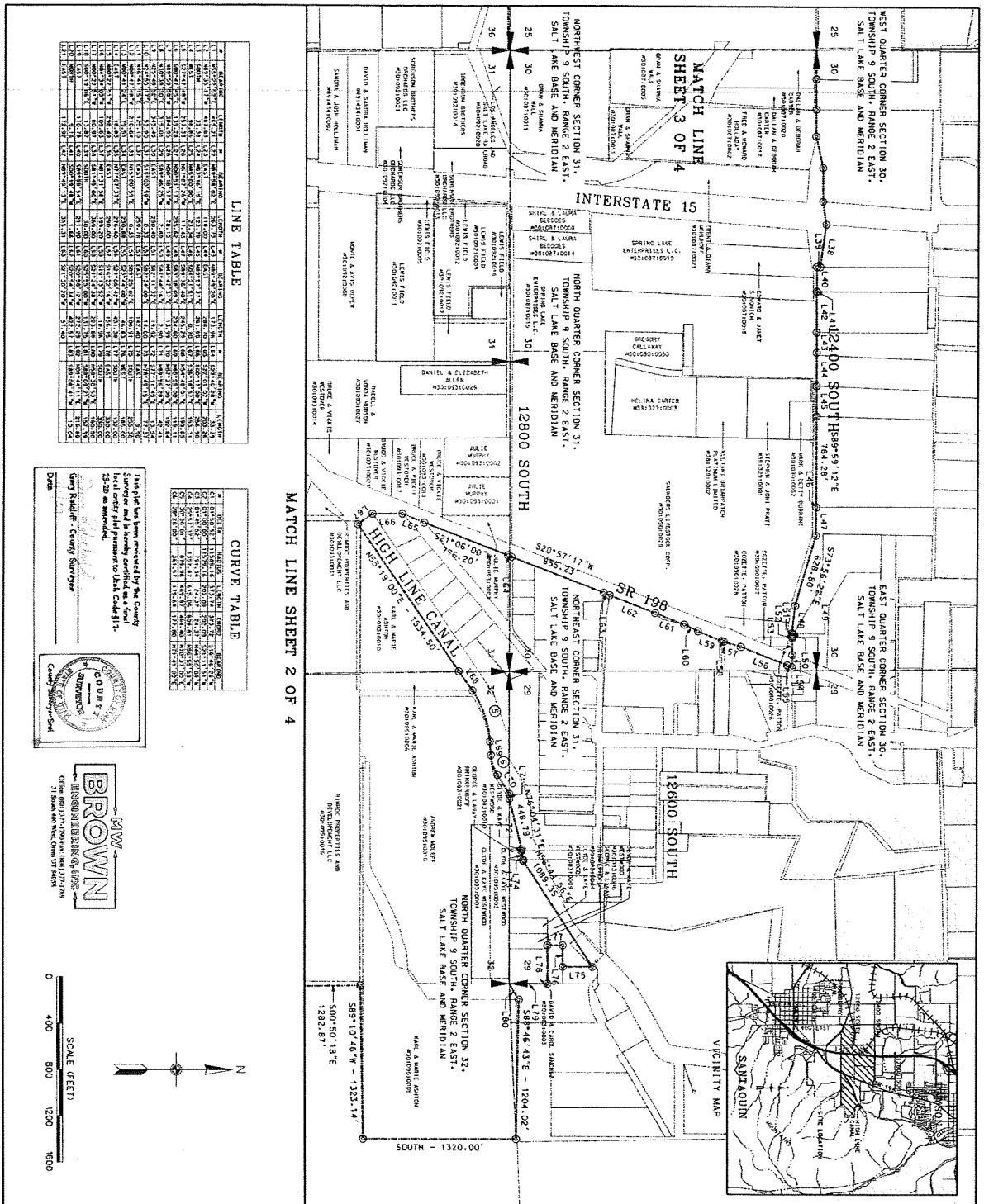
I, Gary Schultz, Surveyor of Santaquin County, Utah, do hereby certify that the above described plat is a true and correct copy of the original plat on file in my office, and that the same has been approved by the County Board of Supervisors and the City Council of Santaquin, Utah.

BOUNDARY DESCRIPTION

SEE SHEET 1 OF 4.

SECTION 1 OF 4

Computer-generated file: 1000005 2008.05.10



MATCH LINE SHEET 2 OF 4

LINE TABLE

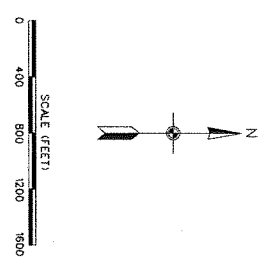
STATION	LENGTH	BEARING	STATION	LENGTH	BEARING
1+00	31.85	S 89° 10' 46" W	1+31.85	31.85	S 89° 10' 46" W
1+31.85	12800.00	E 0° 0' 0" N	1+31851.85	12800.00	E 0° 0' 0" N
1+31851.85	5887.46	S 46° 42' E	1+31851.85+5887.46	5887.46	S 46° 42' E
1+31851.85+5887.46	1292.97	E 89° 10' 46" W	1+31851.85+5887.46+1292.97	1292.97	E 89° 10' 46" W
1+31851.85+5887.46+1292.97	13200.00	E 0° 0' 0" N	1+31851.85+5887.46+1292.97+13200.00	13200.00	E 0° 0' 0" N

CURVE TABLE

STATION	CHORD BEARING	CHORD LENGTH	ARC BEARING	ARC LENGTH	PIECE POINT BEARING	PIECE POINT LENGTH
1+00	S 89° 10' 46" W	31.85	S 89° 10' 46" W	31.85	S 89° 10' 46" W	31.85
1+31.85	E 0° 0' 0" N	12800.00	E 0° 0' 0" N	12800.00	E 0° 0' 0" N	12800.00
1+31851.85	S 46° 42' E	5887.46	S 46° 42' E	5887.46	S 46° 42' E	5887.46
1+31851.85+5887.46	E 89° 10' 46" W	1292.97	E 89° 10' 46" W	1292.97	E 89° 10' 46" W	1292.97
1+31851.85+5887.46+1292.97	E 0° 0' 0" N	13200.00	E 0° 0' 0" N	13200.00	E 0° 0' 0" N	13200.00

State plat has been reviewed by the County Surveyor and is hereby certified as a final plat only filed pursuant to Utah Code 63-2-30 as amended.

Surveyor: *Camry Sawyer*
Camry Sawyer
COUNTY SURVEYOR
SANTAQUIN, UTAH



ACCEPTANCE BY LEGISLATIVE BODY

THIS IS TO CERTIFY THAT THE LEGISLATORS SPANISH FORK CITY COUNCIL HAVE REVIEWED AND HAVE SUBSEQUENTLY ADOPTED AN ORDINANCE AMENDING THE TRACT INTO SPANISH FORK CITY UTM AND THAT A COPY OF THE UTM AND TRACT MAP IS FILED WITH THE COUNTY CLERK'S OFFICE. THE UTM CODE SECTION IS 2-4-2 AS REVISED AND THAT WE HAVE EXAMINED AND DO HEREBY APPROVE AND ACCEPT THE ABSENERATION OF THE TRACT AS SHOWN HEREON AS THE BOUNDARY IDENTIFICATION INSTRUMENT.

DATED THIS 3RD DAY OF JUNE, 2009



SURVEYOR'S CERTIFICATE

I, DARRY ANDERSON, DO HEREBY CERTIFY THAT I AM A REGISTERED LAND SURVEYOR IN THE STATE OF UTAH. I HEREBY CERTIFY THAT THIS IS A TRUE AND ACCURATE MAP OF THE TRACT BY LAND TO BE ANNEXED TO SPANISH FORK CITY, UTM COUNTY, UTM.

BOUNDARY DESCRIPTION

SEE SHEET 1 OF 4.

ANNEXATION PLAT

SHEET 4 OF 4
**NORTHEAST
SANTAQUIN
ANNEXATION**

SANTAQUIN, UTAH
UTAH COUNTY, UTAH

THIS TOWN APPROVED BY UTAH COUNTY AND THE MUNICIPALITIES THEREIN.